



Hand-Picked  
Mountain Experiences

# GEILO

SUMMER GUIDE 2022







NEW SUMMER 2022!

## Contents

- 4 Tourist Information
- 6 National Park Village
- 8 Hiking
- 11 Dining in the Mountains
- 12 Experience Geilo by bike
- 14 Biking
- 17 Summer Activities
- 20 Activity Map
- 22 More Summer Activities
- 24 Geilo Summerpark
- 26 Fishing
- 28 Accomodation
- 30 Trade
- 32 What's Going on in Geilo?



# Tourist Information

The Tourist Information is located in the centre of Geilo, a short walk from the train station.

## We Can Assist You With:

- Information about Geilo and Hol Municipality
- Brochures and trip suggestions
- Sale of postcards, souvenirs and maps
- Information about activities
- Sale of fishing licenses

## Contact Us:

+47 32 09 59 00  
post@geilo.no  
geilo.com

Monday–Friday, 09:00–15:00  
See [geilo.com](http://geilo.com) for updated opening hours.

## QUESTIONS REGARDING ACCOMMODATION AND ACTIVITIES?

Contact Geilo Booking at tel. +47 32 08 85 00 or [mail@geilobooking.no](mailto:mail@geilobooking.no)  
Telephone Hours: Monday–Friday, 09:00–16:00

### TRANSPORTATION

*The Bergen Railway makes it easy to travel both green and sustainably to Geilo. With the app and website, [entur.no](http://entur.no), you will find all public transportation in Norway collected in one place.*

*We have gathered all the information about car rentals, parking places, charging stations, trains, and buses here:*



SCAN ME!



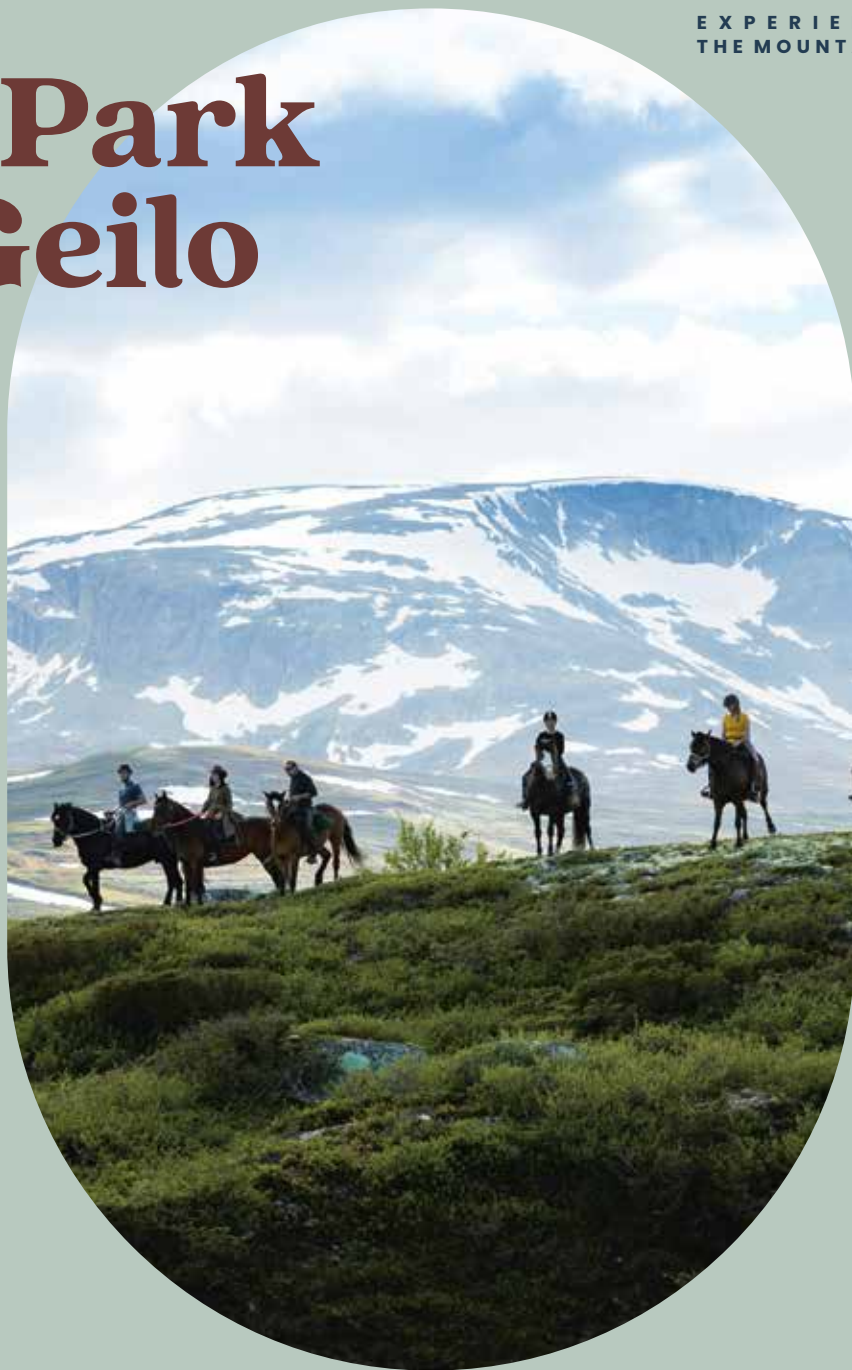
# National Park Village, Geilo

Geilo is located at the top of the Hallingdal valley, and is the portal to two national parks: Hallingskarvet National Park and Hardangervidda National Park. With Geilo as a starting point, it is also a short distance from the fjords.

## HALLINGSKARVET NATIONAL PARK

The Hallingskarvet is a majestic mountain massif that stretches from Finse in the west to Geilo in the east. The characteristic landscape element offers many fine trails with comprehensive hiking opportunities. The Hallingskarvet mountains are the home of the famous philosopher and mountain climber, Arne Næss, who built the cabin called Tvergastein and the Irish Lord, John Garvagh, who, in his time, built the Lordehytte cabin, located at 1,620 meters elevation in the Folarskardet in the Hallingskarvet mountains. Both places are beloved and well-known hiking destinations.

EXPERIENCE  
THE MOUNTAINS



## HARDANGERVIDDA NATIONAL PARK

The Hardangervidda is Northern Europe's largest mountain plateau. It is a fantastic hiking area, that holds Norway's largest national park. The plateau is an important gathering place for the largest wild-reindeer herd in Europe. It is also the southernmost outpost for the arctic fox, snowy owl, and many species of arctic plants and animals. The Hardangervidda plateau is a popular destination year-round.

## FJORD, PLATAEU, AND MOUNTAINS

Experience fjords and mountains on the same day. From Geilo, it takes under two hours to Eidsfjord in the west, where you can experience the Vøringsfossen waterfall or the fjords in Aurland and Flåm in the north.

If you cycle the Navvy Road (Rallarvegen), you can experience one of Norway's most beautiful bike rides. Start at Haugastøl, at 1,000 meters elevation, with beautiful mountains; follow the Bergen Railway and the Flåm Railway, before it ends up at the fjords in Flåm at 2 meters elevation. A hike down the Aurlandsdalen valley is also strongly recommended!

## EXPERIENCE THE BEST OF THE HALLINGDAL VALLEY

Miles of bike trails, mountain summits, and marked hiking trails for both big and small. Wild animals at Langedrag and the Bjørneparken Bear Park, High and Low Climbing Parks (Geilo, Ål, and Hemsedal), and adrenaline-filled activities like rafting and zipline in Geilo and Dagali. In the Hallingdal valley, you will also find a wide selection of cultural activities, with museums, churches, and concerts.



## HIKING

Sustainable mountain trips with Geilo as a starting point—for more detailed descriptions of the routes, scan the QR-code.

### REVESPORET

*A shorter walk from the Geilojordet in the center of Geilo. Revesporet goes to the Geilo Cultural Church, over to a nice fishing hut by the Slåttahølen fishing spot, and past the "Huldreskogen," an outdoor photo exhibition, that's worth a visit.*

*Difficulty Level: Easy*

*Distance: 1.4 km*

*Duration: 30 min*

*Dining along the way: Geilojordet / Geilo Cultural Church*

*Season: All year*

### USTEDALSFJORDEN ROUND

*This is the perfect round-trip suitable for the whole family—on foot, with a baby carriage, or on a bicycle. From the Geilojordet in the center of Geilo, the popular nature and cultural trail undulates and twists and turns all the way around the Ustedalsfjorden lake. Information boards along the way tell Geilo's history and about the flora and fauna.*

*Difficulty Level: Easy*

*Distance: 10 km*

*Duration: Approximately 2 hours*

*Dining along the way: Vestlia Resort / Geilojordet.*

*Season: May – Nov*

### PILVEGEN AND PILTUREN

*Pilvegen is a shorter round-trip up and down from the center of Geilo. Pilturen is a nice hike in varied terrain from the center of Geilo, over the mountains, and back along the Ustedalsfjorden lake. The route offers a nice view over the center, the Hallingskarvet mountains, and the valley.*

*Difficulty Level: Medium*

*Distance: 5.7 km / 13.9 km*

*Duration: 2 hours / 4-5 hours*

*Dining along the way: Food service in the center of Geilo*

*Season: June – Nov*

### BIRGITRUNDEN

*Start the route from Vestlia with a ride up the beautiful mountain terrain on the chairlift. The trail then takes you to the Hakkesetstølen, and then on to Birgithovda at 1,173 meters elevation, with a view to Norway's 6th largest glacier, the Hardangerjøkulen. From here, you continue down the trail via Nystølhovda to the Tuftebrui bridge. A great round-trip!*

*Difficulty Level: Medium*

*Distance: 18 km*

*Duration: 5-7 hours*

*Dining along the way: Hakkesetstølen / Geilo Summer Park*

*Season: June – Nov*



### THE PRESTHOLT ROUND

*If there is a route that should be put on "the bucket list," it is this one! The Sherpa stairs, with all of 2,239 steps, protects nature in the Hallingskarvet National Park, and makes the trip up to the foot of the Hallingskarvet mountains easy and safe. The trail opened in 2013, and takes you up 400 meters of elevation to the fantastic natural surroundings at 1600 meters elevation.*

*Difficulty Level: Hard (medium for experienced mountain hikers)*

*Distance: 6.4 km*

*Duration: 3 h 30 min*

*Season: July – Oct*



SCAN ME!

## DINING IN THE MOUNTAINS

Having a meal as a goal helps the motivation on the route, and gives you a well-earned break. In the mountains around Geilo, you can find several traditional restaurants, tourist cabins, and summer dairy farms. Common to these is the serving of local food and good hosts. Visit [geilo.com](http://geilo.com) for a complete overview, and feel free to check each of the websites/Facebook for updated opening hours and offers.

### HAKKETSTØLEN MOUNTAIN LODGE

Here you can buy tasty, traditional food and homemade baked goods, and the children can meet small animals such as rabbits and chickens. You can get here via car, along the marked DNT (Norwegian Trekking Association) trails, or start the route with the chairlift from Vestlia and up towards the Hakketstølen.

### TUVA TOURIST CABIN

Well-known for their tasty waffles! Tuva is one of the oldest, privately-owned tourist cabins on the Hardangervidda plateau. During the summer, the cabin offers accommodation from the end of June until the beginning of September; thereafter, dining on the weekends through September. You can reach Tuva by car (toll road) or summer bus; alternatively, by bicycle or by hiking.

### GEILOJRDET AND GEILO CULTURAL CHURCH CAFÉ

Geilojordet is a gem in the center of Geilo. During the summer, it is an outdoor café, storytelling theater, where farm kids from 1880 show you around the yard and the life on the farm in the olden days, and there are also petting animals and a playground at the Geilojordet.

The café at the Geilo Cultural Church offers a simple service; and on the floor above, there are many different exhibitions. You are welcome to ask about a tour of the church together with one of the many tireless volunteers who work in the café.

### PRESTHOLTSETER

The summer dairy farm is located at the foot of the Hallingskarvet mountains, at 1,242 meters elevation, right by the Hallingskarvet National Park. In the café, they tempt you with traditional food, such as cured meats and tasty sour cream porridge. Accessible by foot, bike and by car (toll road).

### CAFÉ PRESTTUN

In the heart of Ustaoset, you will find Café Presttun, a nice café that is open during the high season. Here they serve both lunch and dinner dishes. Café Presttun also serves alcohol, and is known for their homemade baked goods and homemade food.

### CHEESE VILLAGE

A cooperation between 8 cheesemakers that produce world-class cheese. The recipes and the operations have been perfected over generations. The people behind the Cheese Village live for and with their animals, give them love, and the best conditions for good ingredients, with the taste of the mountains. Several of the producers have open farms for visiting, or visit the Hol Ysteri for sales and a café.



# EXPERIENCE THE MOUNTAINS FROM A BICYCLE SEAT

Here we have gathered five nice touring bike rides. For a more detailed description of the routes. Scan the QR-Code.

## HOLSFJORDEN ROUND

*A wonderful round-trip suitable for cycling and hiking, as well as with baby carriages and wheelchairs. Along the route, you can visit the Hol Old Church; and if you have any leftover energy, you can test yourself at the Energy Staircase with 408 stairs.*

*Difficulty Level: Easy  
Distance: 12 km  
Duration: 1–2 hours  
Open: May to November  
Dining along the way: Hol Ysteri*

## USTEDALSFJORDEN ROUND

*The nature trail around the beautiful Ustedalsfjorden lake, close to the center, is a perfect excursion for the family on bikes. The 10 km long gravel road is flat and easy to follow. You can learn about the local history, culture, and fauna from the many information boards along the way; or stop by the Fekjo Cultural Park, the Viking graves, or the Tuftebrui bridge.*

*Difficulty Level: Easy—family-friendly  
Distance: 10 km  
Duration: 1–2 hours  
Open: From the end of May to early November  
Dining along the way: Geilojordet, Geilo Summer Park, several alternatives in Geilo center*

## THE NAVVY ROAD (RALLARVEGEN)

*Norway's most beautiful bicycle route from mountain to fjord! The Navvy Road brings you from Haugastøl, on the Hardangervidda plateau, over the rocky, naked mountains at Finse, down to the lush scenery at the fjord at Flåm, in one day. This isn't just a spectacular bike route, but a travel through history. Book the Navvy Road package with accommodations and bicycle rental at [geilo.com](http://geilo.com).*

*Difficulty Level: Medium  
Distance: 52.4 km  
Duration: Haugastøl to Finse, 3 hours; Finse to Flåm, 6 timer  
Open: July to September  
Dining along the way: Haugastøl / Finse, etc.*

## SETERDALEN IN DAGALI

*With the Numedalslågen river on the one side, and old farms on the other, this is a great bicycle route. The route consists of good road surfaces, and goes in to slightly hilly terrain. The route goes slightly uphill and is rewarded with pleasant downhill on the way home. If you would like a walk at the half-way point, we recommend the 3 km to the Tunga bridge.*

*Difficulty Level: Medium  
Distance: 40 km  
Duration: 3 hours  
Open: The end of June until early November  
Dining along the way: Åan Tourist Cabin / Joker Dagali grocery*

## SKURDALEN – TUVA

*A longer bike ride in hilly terrain and longer, demanding hills from Skurdalen to the Tuva Tourist Cabin. The route starts at Nedrestøl in Skurdalen and goes through beautiful surroundings on the Hardangervidda plateau. The view of both the national parks is very special! You can have an even tougher route starting from Geilo, via the Gamle Skurdalsvegen road to the Hakkesetstølen and down to Skurdalen.*

*Difficulty Level: Difficult  
Distance: 24 km  
Duration: 2–4 hours  
Open: From the start of July to mid-October  
Dining along the way: Hakkesetstølen / Tuva Tourist Cabin*



**SCAN ME!**

# Biking in Geilo

BICYCLE

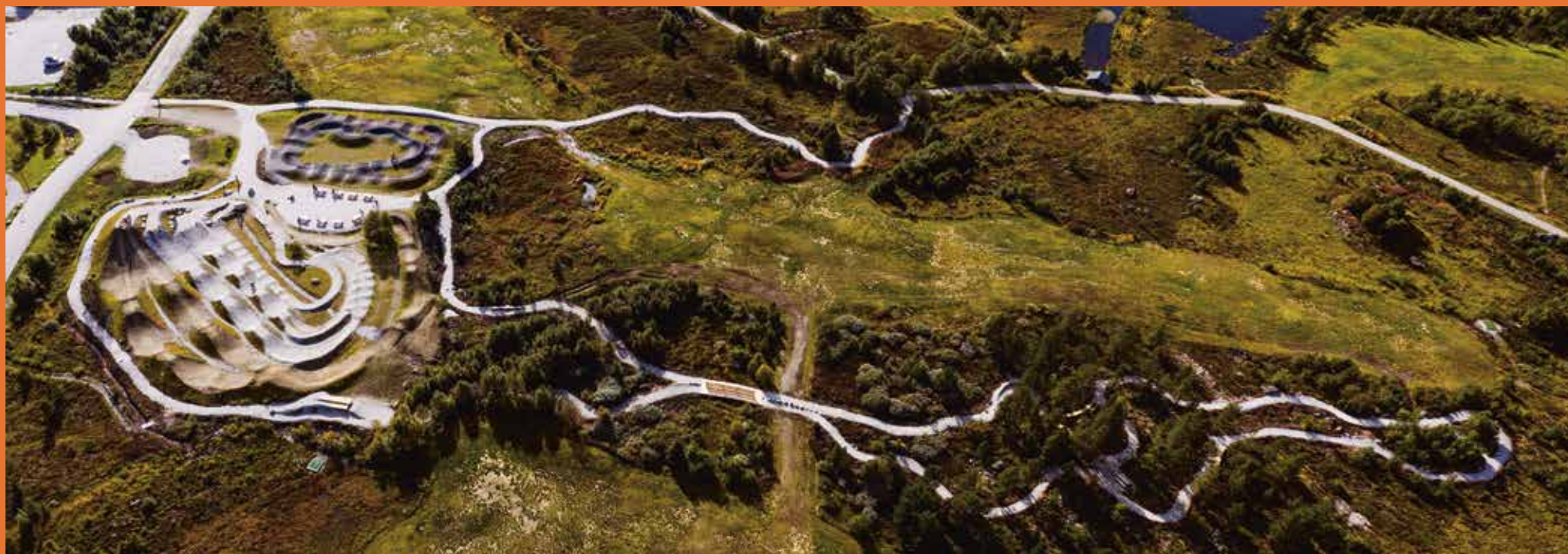
In Geilo, you will find versatile and family-friendly bicycle offerings.

In recent years, there has been a great investment in mountain biking in Geilo, and there is a varied offering that can activate everyone from the little ones in the family to the cycling enthusiasts! Here you will find everything from skill trails at the beginner level, long routes with mountain views, pump tracks, jump lines, and lift-based downhill tracks and flow paths with excitement, speed, and flow!

GEILO  
**RIDES**

## = Quality and Experiences

In the Hallingdal valley, more bicycle trails are being built right now than anywhere else in Scandinavia; and RIDES is the name of the region's official mountain bike offering. All the tracks and arenas are made for maximum fun on two wheels and graded according to difficulty level, so that cyclists can easily choose a track according to their skill. Geilo RIDES is our quality-assured cycling offering, and is created to give families, beginners, and experienced cyclists a versatile and fun cycling experience of the highest quality. For inspiration and several bicycle products in the whole Hallingdal valley, see [rides.no](https://rides.no).





## Bicycle Rental

Geilo's largest bicycle rental is located at the Geilo Summer Park, with a large selection of bicycles, customized for all the bicycle activities in Geilo. If you are going to cycle the Navvy Road (Rallarvegen), Haugastøl has bicycle rental. All bikes can be booked via [geilo.com](https://geilo.com).

## Correct Choice of Bike:

### MOUNTAIN BIKE

A good mountain bike from Rossignol, with thicker tires for better comfort and grip. Hardtail frame with dampening in the front that is well-suited for bike rides on asphalt and gravel roads.

### ELECTRIC BIKE

E-Track 27+ is a hardtail electrical-assisted mountain bike with good performance for both easy climbing and descents. With its low weight, it is well-suited for bicycle trips in the mountains, on asphalt, and gravel roads.

### BMX BIKE

A playful BMX bicycle with original design. Perfect for jumps and playing on the pump track.

### FULL SUSPENSION TRAIL BIKE

A full suspension trail bicycle from Rossignol for those who want to bike off the beaten track. This bicycle is light and gives you good control in more challenging terrain. Perfectly suitable for flow tracks, pump tracks, and for biking on trails in the mountains.

### FULL SUSPENSION DOWNHILL BIKE

A heavier and stable downhill bicycle intended for tough descents. This bicycle is suitable for those who want to take the lift up and challenge themselves in the flow paths from the top.

### BALANCE BIKE FOR CHILDREN

A fun running-bike without pedals for the youngest. Suitable for paved bicycle trails and pump tracks.

### FATBIKE

Fatbikes are a mountain bike with over-dimensioned tires, that were developed for cycling on soft and unstable terrain, such as snow or sand.

### BICYCLE CARTS

Mounted on regular mountain bikes (not electrical bicycles), and can accommodate 2 children. Maximum load is 18 kg.

### HELMETS / PROTECTIVE EQUIPMENT

We have regular bicycle helmets for loan when renting mountain, electric, and trail bicycles. These can also be rented if you have your own bicycle.

## GEILO

## SUMMER ACTIVITIES



BOOK HERE!

Geilo and the surrounding areas offer several fun activities and good experiences in the mountains.

## Fun on the Water!



### RAFTING

Experience rafting at its best in Dagali. Here you will find rafting experiences from three different providers, offering trips for families with children down to 8 years, to the adrenaline-seekers who want a good challenge and a real adrenaline-kick.



### CANOE AND BOAT RENTAL

Paddle trips on the Ustedalsfjorden lake/Veslefjorden is a perfect experience even on grey-weather days. Maybe you will spot the beavers that live in the area.



### HALNEKONGEN

With the boat, Halnekongen, as transport, you will have access to many great hiking routes in the national park up on the Hardangervidda plateau; or take a nice round-trip on the boat. Having a bite at the Halne Mountain Lodge before or after your trip is recommended!



FISHING

Fishing experiences for you as a beginner and food-lover. Join a fishing trip with a knowledgeable local guide, where you get the possibility to try out your fishing luck and then prepare your catch for a wonderful mountain meal.



CANYONING

Here you get the opportunity to frolic with nature as your playground. Rappel down rock walls, jump into potholes, and slide down water slides that nature has created.



SUP

Stand-up paddle board on the Ustedalsfjorden lake! Nothing is better than splashing around the lake in the summer heat in fantastic mountain surroundings. SUP-rental is found at the Vestlia Resort.



KAYAK

Kayaking at Finse must be the closest one comes to paddling in "arctic waters," with magical views of mountains and glaciers.



SAUNA AND SWIMMING

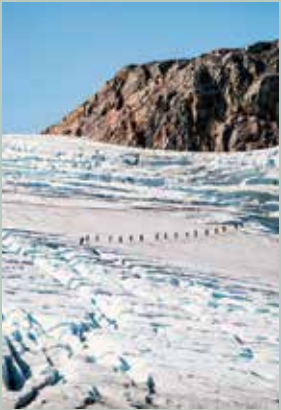
Real mountain spa. Perhaps a surprise element for a trip with friends, or a wonderful ending to a hike in the mountains? It is now possible to book a 90-minute, private, sauna experience. We always promise good swimming conditions outside the door.







## Other Exciting Activities in the Mountains!



### GUIDED GLACIER TOURS

Together with experienced guides, you can have the opportunity to experience the Hardangerjøkulen glacier up close, learn the history, and everything that the ice can tell us.



### BICYCLE GUIDE

Guided cycling and instruction for beginners to experienced. If you want to hone your technique, develop skills, or be taken to the best trails—we offer different guided bicycle tours and cycling courses for both big and small.



### HORSEBACK RIDING

Experience the mountains from the back of a horse. Geilo has two horse centers that offer great tours in the mountain terrain, either in the Budal area or in the Vestlia area. The tours are adapted for both beginners and the more experienced.

### LANGEDRAG NATURE PARK

A unique experience with over 350 animals from 25 different species, in their natural habitat. Open every day—buy your entrance ticket at [geilo.com](http://geilo.com).



### RAINY DAY?



SCAN FOR  
INDOOR  
ACTIVITIES

### Groups?

See [geilo.com](http://geilo.com) for suggestions for group activities.





NEW SUMMER 2022!

# HØYT & LAVT

GEILO SOMMERPARK

In cooperation with High & Low (Høyt & Lavt), a completely new climbing park will be opening at Geilo Summer Park.

There will be 3 training trails, 2 orange, 2 green, 1 blue, and 1 red trail – all packed with lots of fun and exciting challenges, some airy hovering, and guaranteed both a feeling of mastery and a little bit of butterflies in your stomach!

## Geilo Summer Park

A natural starting point for an active day in Geilo. Here you will find a high rope course, zipline, summer chairlift, lift-based bicycle tracks, kiosk, BaseCamp Restaurant, summer shop, and Geilo's largest bicycle rental.

**OPENING HOURS 2022:**

June 25--Aug 21:	Every day, 10:00–17:00
Aug 27--Oct 2:	Saturday & Sunday, 10:00–17:00
Oct 3–Oct 16:	Every day, 10:00–17:00



**ZIPLINE**

Have you ever wondered what it's like to fly? Try a 2-minute long airy soar with spectacular views toward the Hallingskarvet mountains and the Hardangervidda plateau.



**SUMMER CHAIRLIFT AND VIEW OF THE NATIONAL PARK**

The summer lift is an ideal starting point for hiking in the Hardangervidda National Park, and a starting point for lift-based cycling in Geilo. At the top, there is a fantastic view over the Hallingskarvet mountains, the Hallingskarvet National Park, and Geilo.



**FRISBEE GOLF/ FOOTBALL GOLF**

The course is located by the golf course at Vestlia Resort. You can play individually or in team competitions. There is also a football golf course right next to it. Book it at the Vestlia Resort.



# Fishing in Lakes and Rivers

## The Fishing Licence Areas to Geilo Hunting and Fishing Association

The areas consist of, among others, the Ustedalsvassdraget watercourse, which runs centrally through Geilo. From Kikut and westward toward Grødalen, you will find several good lakes, for example, Store Hakkeset. Over the Hallingskarvet Ski Center, Halletjønn should be mentioned. North of Haugastøl, there are several alternatives. A 1-hour hike from Tuva Tourist Cabin, you will find Skjerja\*, which entices you with trout of around 1 kg.

## The Fishing Licence Area to Hol Hunting and Fishing Association

Most of the waters at the disposal to this organization are located inside the Hallingskarvet National Park, from Ynglesdalen to, among others, Kyrkjedørvatna. Trout are released regularly so that the stock is generally good and in proportion to the food supply. The fish are usually of the highest quality and with a great red color.

## Fishing Licences

You can buy fishing licences at the Tourist Information, the sporting stores in Geilo, the grocery stores at Hagafoss and Hovet, with other tourist companies, or online at [inatur.no](http://inatur.no) and [perfish.no](http://perfish.no).

Book a guided "Gourmet Fishing Trip" with Vinternatt, and read more about fishing at [geilo.no](http://geilo.no).



THE FISH ARE  
BITING IN GEILO



SCAN ME!



# Stay Well, Sleep Well

ACCOMODATION

Choosing the right place to stay can give the little extra to your Geilo vacation! In Geilo and the surrounding area, you will find everything from the traditional hotels to the camping life.

The selection is wide, whether you want to bring your family to a large resort hotel with family activities, or take your loved one to an “arctic dome” on the plateau with a view of the starry heavens. Perhaps it works best for you to stay in a well-equipped cabin, with the freedom of preparing your own meals? No matter what you choose, Geilo is well-known for its hospitable hosts; and we promise that you and your family will be cared for well.

Book your accommodation on geilo.com. Here you will find an overview of all accommodation in and around Geilo, and it's easy to compare prices and facilities.



## RESTING PULSE

In the mountains, you will find peace; whether you choose to live stately or simply.





# Shopping and Enjoyment

TRADE

With over 40 shops in the center, you will find everything from retail, such as sporting equipment, flowers, apparel, and interior design shops to a wonderful cup of cappuchino. Don't forget to visit our traditional craft companies: Brusletto & Co, Brødrene Øyo and Skaugum Cutlery. They all have their own factory outlets.







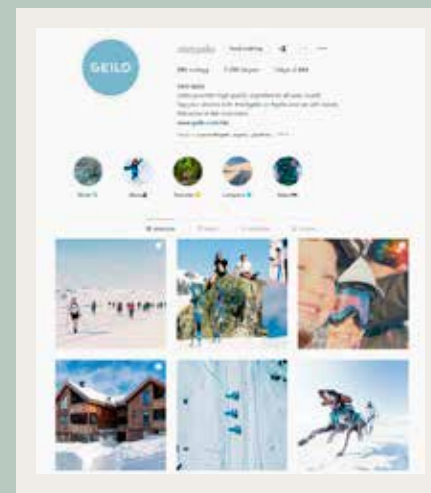
# WHAT'S GOING ON IN GEILO?

You will find exciting events in Geilo year-round. Did you know that Geilo has its own food and wine festivals, Norsk Matglede and Stetten? Or the music festival, Helt på Vidda, that is held at the top of the slalom hill?

Scan the QR-Code with your camera and find out what's happening in Geilo when you are visiting!



SCAN ME!



Follow us on  
Facebook,  
@Geilo, and  
Instagram,  
@visitgeilo



## WINTER ENJOYMENT IN GEILO 2022/2023

Geilo gives you the best mountain experiences  
– remember to book early for the best offers!







# STETTEN 2022

Join this year's  
wine weekend filled  
with flavours!

**30.10 - 01.11**

## HeltPåVidda

**25.-27. August 2022**

Wig Wam • Di Derre • Broiler • Daniel Kvammen  
Michelle Ullestad • Lucy Kay Allen • Jonathan Floyd  
Vivillain • Kicksliip • Wiggy Waggy



Welcome to our food  
festival this autumn!

**08. October**



SCAN  
FOR DIGITAL  
VERSION

# GEILO



Hallingskarvet  
nasjonalpark



BÆREKRAFTIG  
REISELIV  
LOKALT ENGASJEMENT  
I ET LANGT PERSPEKTIV



Hardangervidda  
nasjonalpark